


LOC I-DOF	APP CRS	Rwy Idg	5150
111.7		TDZE	1627
Chan 54	001°	Apt Elev	1629

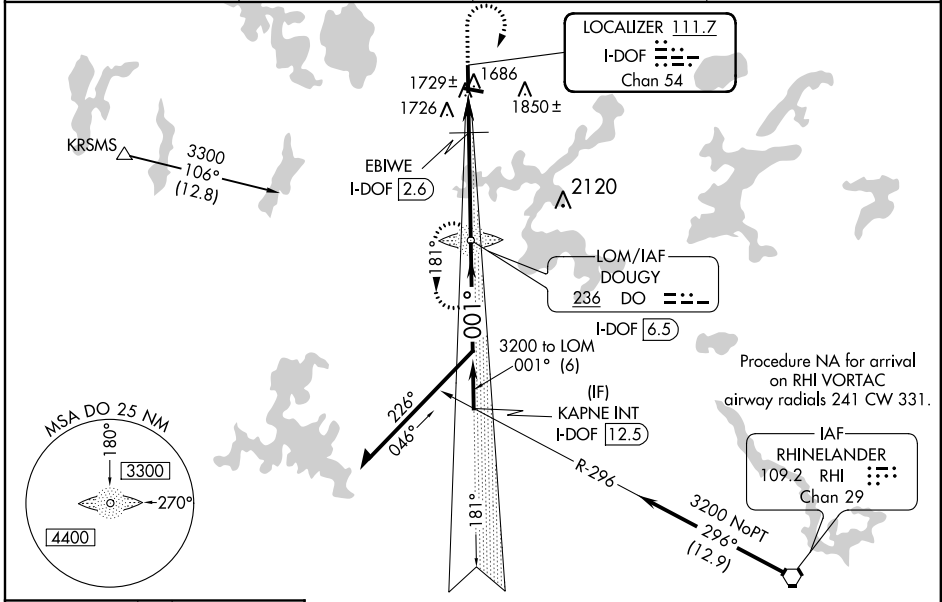
LOC RWY 36

LAKELAND/NOBLE F LEE MEMORIAL FIELD (A.R.V)

ADF Required. Visibility reduction by helicopters NA. Inoperative table does not apply to S-36 Cats A, B and EBIWE FIX minimums S-36 Cats A, B, C. For inoperative MALS_R, increase S-36 Cat C visibility ¼ mile and EBIWE FIX minimums Cat D visibility ¼ mile. When local altimeter setting not received, use Eagle River altimeter setting and increase all MDA 60 feet and increase S-36 Cat D visibility ¼ mile. For inoperative MALS_R when using Eagle River altimeter setting, increase EBIWE FIX minimums Cats C, D visibility ¼ mile.

MALS_R
 MISSED APPROACH: Climb to 3300 then right turn direct DO LOM and hold.

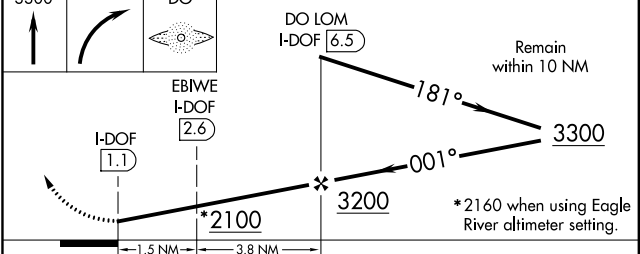
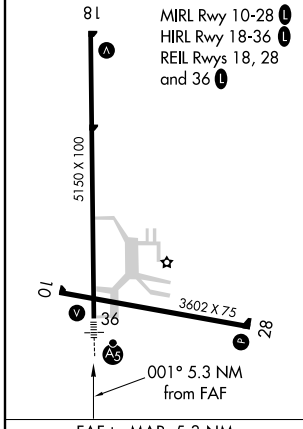
AWOS-3 121.125	MINNEAPOLIS CENTER 133.65 281.5	GREEN BAY RADIO 122.6	UNICOM 122.7 (CTAF) 0
--------------------------	---	---------------------------------	---------------------------------



EC-3, 10 DEC 2015 to 07 JAN 2016

EC-3, 10 DEC 2015 to 07 JAN 2016

ELEV 1629	TDZE 1627
------------------	------------------



CATEGORY	A	B	C	D
S-36	2100-1 473 (500-1)			
CIRCLING	2100-1	471 (500-1)	2200-1½ 571 (600-1½)	2200-2 571 (600-2)
EBIWE FIX MINIMUMS				
S-36	1980-1 353 (400-1)			
CIRCLING	2100-1	471 (500-1)	2200-1½ 571 (600-1½)	2200-2 571 (600-2)