

NDB ARV <b>221</b>	APP CRS <b>291°</b>	Rwy Idg <b>3602</b>
		TDZE <b>1625</b>
		Apt Elev <b>1629</b>

# NDB RWY 28

LAKELAND/NOBLE F LEE MEMORIAL FIELD (ARV)

**⚠** When local altimeter setting not received, use Eagle River altimeter setting and increase all MDA 60 feet, increase S-28 Cats C and D and Circling Cat C visibility ¼ mile.

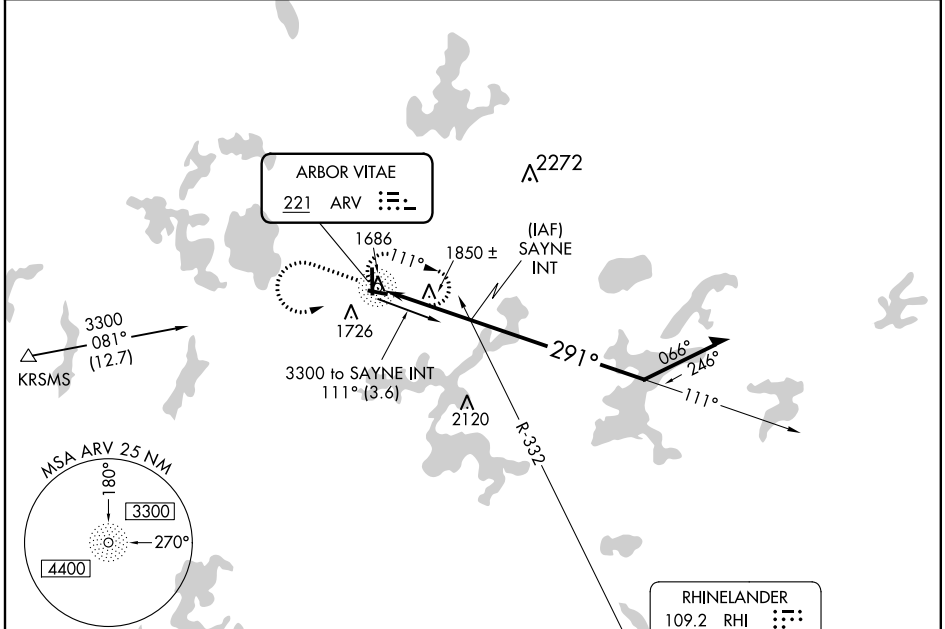
**MISSED APPROACH:** Climb to 3300 then left turn direct ARV NDB and hold.

AWOS-3  
**121.125**

MINNEAPOLIS CENTER  
**133.65 281.5**

GREEN BAY RADIO  
**122.6**

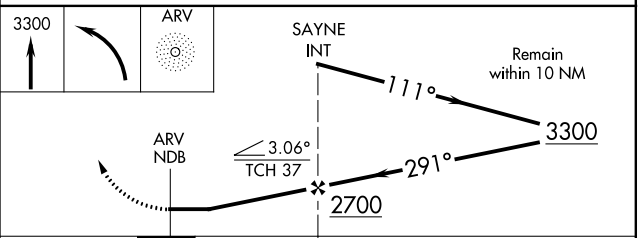
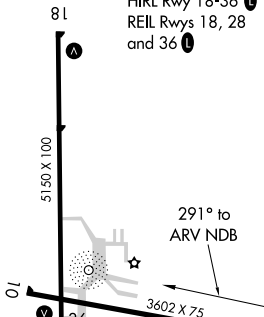
UNICOM  
**122.7 (CTAF) 0**



EC-3, 10 DEC 2015 to 07 JAN 2016

EC-3, 10 DEC 2015 to 07 JAN 2016

ELEV 1629	TDZE 1625
MIRL Rwy 10-28 <b>1</b>	
HIRL Rwy 18-36 <b>1</b>	
REIL Rwys 18, 28 and 36 <b>1</b>	



CATEGORY	A	B	C	D
S-28	2200-1 575 (600-1)		2200-1½ 575 (600-1¾)	2200-1¾ 575 (600-1¾)
CIRCLING	2200-1 571 (600-1)		2200-1½ 571 (600-1½)	2200-2 571 (600-2)