

WAAS CH 72915 W18A	APP CRS 181°	Rwy Idg 5150 TDZE 1629 Apt Elev 1629
--	------------------------	--

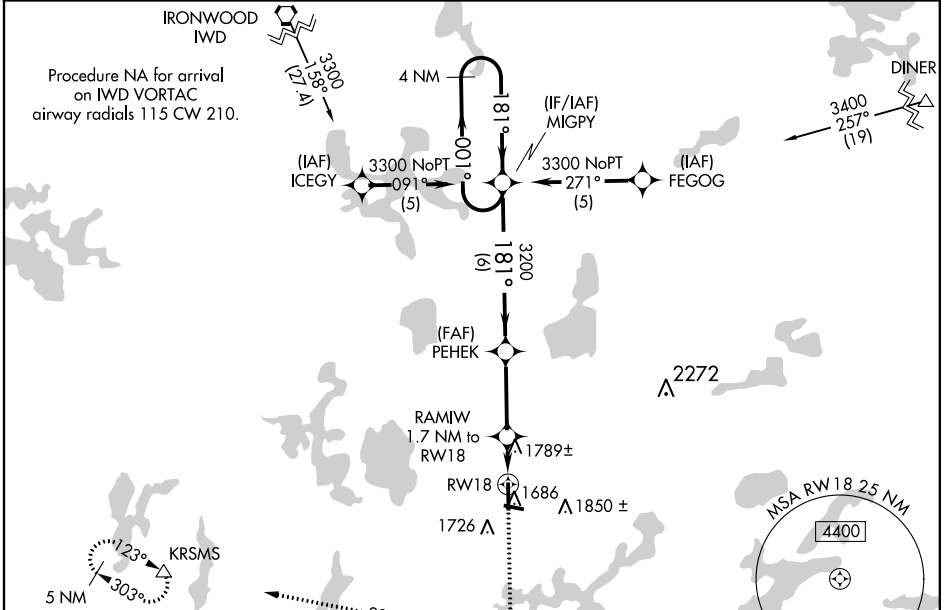
RNAV (GPS) RWY 18

LAKELAND/NOBLE F LEE MEMORIAL FIELD (A.R.V)

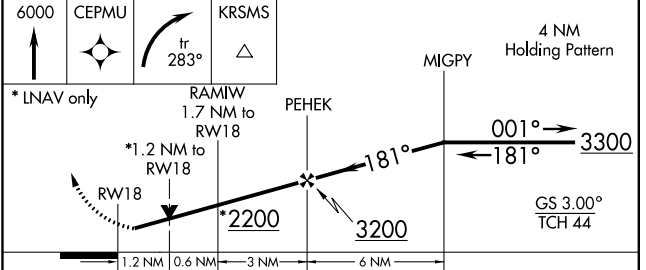
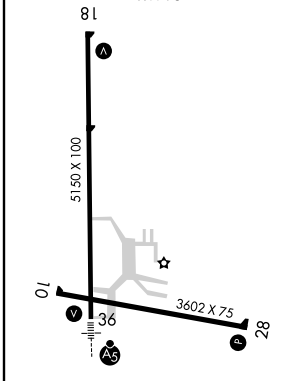
▼ For uncompensated Baro-VNAV systems, LNAV/VNAV NA below -18°C (0°F) or above 45°C (113°F). DME/DME RNP-0.3 NA. Visibility reduction by helicopters NA. When local altimeter setting not received, use Eagle River altimeter setting and increase all DA 47 feet and all MDA 60 feet, increase LNAV Cat D and Circling Cat C visibility ¼ mile. Baro-VNAV and VDP NA when using Eagle River altimeter setting.

▲ MISSED APPROACH: Climb to 6000 direct CEPMU and right turn via track 283° to KRSMS and hold, continue climb-in-hold to 6000.

AWOS-3 121.125	MINNEAPOLIS CENTER 133.65 281.5	GREEN BAY RADIO 122.6	UNICOM 122.7 (CTAF) 0
--------------------------	---	---------------------------------	---------------------------------



ELEV 1629	TDZE 1629
-----------	-----------



CATEGORY	A	B	C	D
LPV DA		1973-1¼	344 (400-1¼)	
LNAV/VNAV DA		2100-1¾	471 (500-1¾)	
LNAV MDA	2040-1	411 (500-1)	2040-1¼	411 (500-1¼)
CIRCLING	2100-1	471 (500-1)	2200-1½	2200-2
			571 (600-1½)	571 (600-2)

MIRL Rwy 10-28
HIRL Rwy 18-36
REIL Rwys 18, 28 and 36

EC-3, 10 DEC 2015 to 07 JAN 2016

EC-3, 10 DEC 2015 to 07 JAN 2016