

WAAS CH 49115 W36A	APP CRS 001°	Rwy Idg 5150 TDZE 1627 Apt Elev 1629
----------------------------------------	------------------------	--------------------------------------------------------------------------

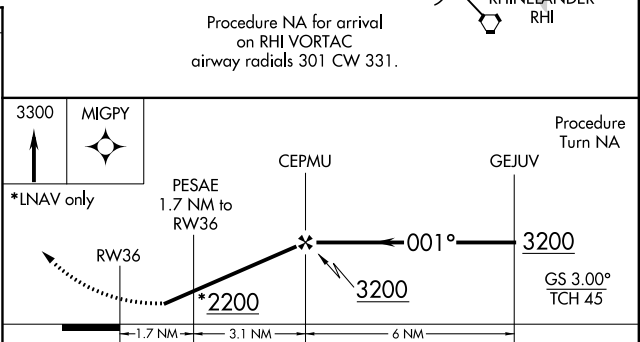
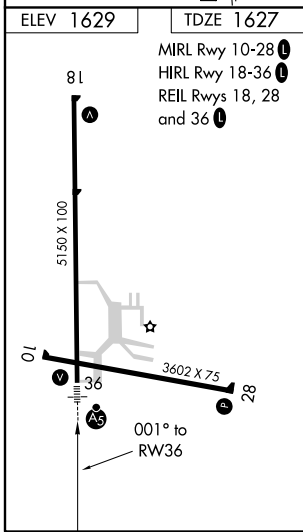
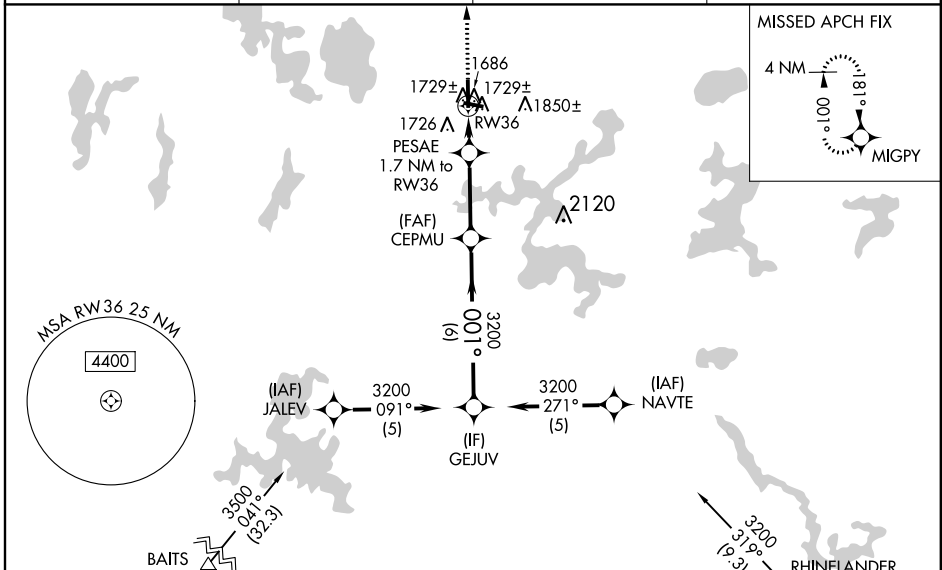
RNAV (GPS) RWY 36

LAKELAND/NOBLE F LEE MEMORIAL FIELD (A.R.V)

⚠ Baro-VNAV NA when using Eagle River altimeter setting. For uncompensated Baro-VNAV systems, LNAV/VNAV NA below -18°C (0°F) or above 45°C (113°F). DME/DME RNP-0.3 NA. Visibility reduction by helicopters NA. Inoperative table does not apply to LNAV Cats A, B, C. For inoperative MALSR, increase LNAV/VNAV all Cats and LNAV Cat D visibility ¼ mile. When local altimeter setting not received, use Eagle River altimeter setting and increase all DA 47 feet and all MDA 60 feet and increase Circling Cat C visibility ¼ mile. Inoperative table does not apply to LNAV Cats A, B when using Eagle River altimeter setting. For inoperative MALSR when using Eagle River altimeter setting, increase LNAV Cats C, D, visibility ¼ mile.

MALSR
 MISSED APPROACH:
Climb to 3300 direct
MIGPY and hold.

AWOS-3 121.125	MINNEAPOLIS CENTER 133.65 281.5	GREEN BAY RADIO 122.6	UNICOM 122.7 (CTAF)
--------------------------	-------------------------------------------	---------------------------------	-------------------------------



CATEGORY	A	B	C	D
LPV DA		1948-1	321 (400-1)	
LNAV/VNAV DA		1999-1	372 (400-1)	
LNAV MDA		1980-1	353 (400-1)	
CIRCLING	2100-1	471 (500-1)	2200-1½ 571 (600-1½)	2200-2 571 (600-2)

EC-3, 10 DEC 2015 to 07 JAN 2016

EC-3, 10 DEC 2015 to 07 JAN 2016